



2023  
NEUROSCIENCE  
SYMPOSIUM

**FRIDAY, SEPT. 15, 2023**

8:50 a.m. to 3:50 p.m.

*Registration, breakfast and exhibitors begin at 8 a.m.*

Kentucky International Convention Center

221 S. Fourth St. • Louisville, Kentucky

*Entry for the event is at the corner of Third and Jefferson streets.*

*Provided by*



**NORTON**  
NEUROSCIENCE INSTITUTE

# Agenda

## General sessions

---

- 8 a.m. Registration and breakfast; visit with exhibitors
- 8:50 a.m. Welcome and announcements
- 8:55 a.m. **Keynote address**  
**Reducing Disparities in Stroke Outcomes: Lessons Learned From the Florida Stroke Registry**  
Tatjana Rundek, M.D., Ph.D.
- 9:55 a.m. **Headache Update: Making the Call and Next Best Steps**  
Brian M. Plato, D.O.
- 10:40 a.m. Break; visit with exhibitors
- 11:05 a.m. **Updates in Women and Multiple Sclerosis**  
Roman M. Kassa, M.D., Ph.D.
- 11:50 a.m. **Epilepsy 101**  
Ambica M. Tumkur, M.D.
- 12:35 p.m. Lunch; visit with exhibitors
- 1:35 p.m. **Updates in the Management of Common Movement Disorders**  
Justin T. Phillips, M.D.
- 2:20 p.m. **Latest in Stroke Management**  
Lacy Samuel Handshoe, D.O.
- 3:05 p.m. **Dementia Update: Evaluation and New Emerging Treatments**  
Gregory E. Cooper, M.D., Ph.D.
- 3:50 p.m. Adjournment

## Rehabilitation concurrent sessions

---

- 9:55 a.m. **COVID-19: How to Help Patients Emerge From Brain Fog**  
Anne Blandford, SLPD, CCC-SLP  
Brittany McAndrew, M.A., CCC-SLP, BCS-S, CBIS
- 10:40 a.m. Break; visit with exhibitors
- 11:05 a.m. **Under the Hood: Understanding the Mechanics of a Driving Assessment and Treatment**  
Keegan Humphrey, MSOT, OTR/L, CDRS, CSRS, CLVT, CFPS, CDI, DPAM
- 11:50 a.m. **Multiple Sclerosis: Benefits of Multidisciplinary Rehabilitation Throughout the Disease Course**  
Abigail L. Scinta, DPT, MSCS

## Nursing concurrent sessions

---

- 1:35 p.m. **Topic 1: Seizure Treatment Update: Implications for Nursing**  
**Topic 2: Epilepsy Self-management and Patient-centered Nursing Care**  
Wendy Trueblood-Miller, Ph.D., R.N., CNS, CCRN, FAAN, FAES

## Target audience

This activity is targeted toward physicians, advanced practice providers, nurses and other clinicians in primary care, emergency medicine, neurology, neurosurgery, and physical medicine and rehabilitation.

## Statement of educational need

This symposium will provide practitioners the latest updates on caring for patients with neurological disorders. Topics include updates on research, advancements in technology and available treatment options that can be vital to maximizing patient outcomes. Practitioners and clinicians should be aware of the latest neurological guidelines and advancements to effectively treat patients who present with neurological symptoms and disorders.

## Objectives

1. Describe the latest clinical guidelines in the initial treatment of patients who present with neurological symptoms and/or disease.
2. Discuss treatment advances for patients with neurological disorders.
3. Identify primary and specialty treatment resources for specific neurological diseases.

## Course director

### **Gregory E. Cooper, M.D., Ph.D.**

Chief of Adult Neurology  
Medical Director, Memory Center  
Norton Neuroscience Institute

## Guest faculty

### **Tatjana Rundek, M.D., Ph.D.**

Professor of Neurology and Public Health Sciences  
University of Miami Miller School of Medicine  
Miami, Florida

### **Wendy Trueblood Miller, Ph.D., R.N., CNS, CCRN, FAAN, FAES**

Associate Professor  
Indiana University School of Nursing  
Bloomington, Indiana

## Local faculty

### **Anne Blandford, SLPD, CCC-SLP**

Speech-language Pathologist  
Norton Neuroscience Institute Cressman  
Neurological Rehabilitation

### **Gregory E. Cooper, M.D., Ph.D.**

Chief of Adult Neurology  
Medical Director, Memory Center  
Norton Neuroscience Institute

### **Lacy Samuel Handshoe, D.O.**

Neurologist  
Norton Neuroscience Institute

### **Keegan R. Humphrey, MSOT, OTR/L, CDRS, CSRS, CLVT, CFPS, CDI, DPAM**

Occupational Therapist  
Norton Neurosciences & Spine Rehabilitation Center

### **Roman M. Kassa, M.D., Ph.D.**

Neurologist  
Norton Neuroscience Institute

### **Brittany McAndrew, M.A., CCC-SLP, BCS, CBIS**

Speech-language Pathologist  
Norton Neuroscience Institute Cressman  
Neurological Rehabilitation

### **Justin T. Phillips, M.D.**

Neurologist  
Norton Neuroscience Institute

### **Brian M. Plato, D.O.**

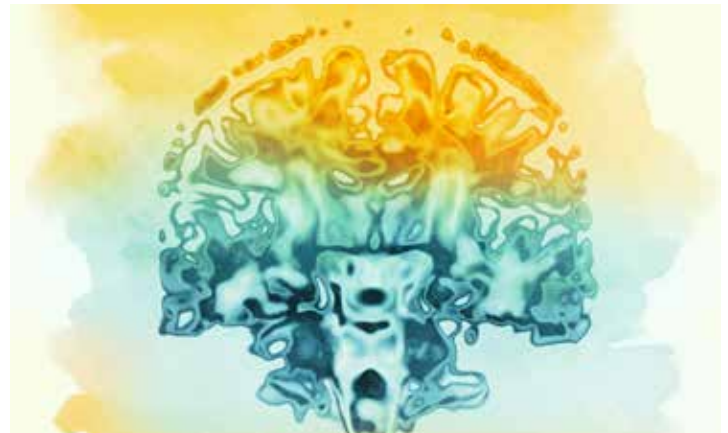
Headache Medicine Specialist  
Norton Neuroscience Institute

### **Abigail L. Scinta, DPT, MSCS**

Physical Therapist  
Norton Specialty Rehabilitation Center – St. Matthews

### **Ambica M. Tumkur, M.D.**

Neurologist  
Norton Neuroscience Institute



# Continuing education credits

## Physicians

*AMA PRA Category 1 Credits™*

**Accreditation:** Norton Healthcare is accredited by the Kentucky Medical Association to provide accredited continuing medical education for physicians.

**Designation:** Norton Healthcare designates this live activity for a maximum of 5.50 *AMA PRA Category 1 Credits™*. Physicians should claim only the credit commensurate with the extent of their participation in this activity.

*American Board of Internal Medicine*



Participants who successfully complete this CME activity, including the evaluation component, may earn up to 5.50 MOC points in the American Board of Internal Medicine's (ABIM) Maintenance of Certification (MOC) program. Participants will earn MOC points equivalent to the amount of CME credits claimed for the activity. The CME activity provider is responsible for submitting participant completion information to the Accreditation Council for Continuing Medical Education for the purpose of granting ABIM MOC credits.

For questions related to continuing medical education, contact the Norton Healthcare Center for Continuing Medical, Provider & Nursing Education at **(502) 446-5955** or **cme@nortonhealthcare.org**.

## Nurses

*American Nurses Credentialing Center*

Norton Healthcare Institute for Education & Development is approved with distinction as a provider of nursing continuing professional development by the South Carolina Nurses Association, an accredited approver by the American Nurses Credentialing Center's Commission on Accreditation. This continuing professional development activity has been approved for 5.5 contact hours. In order for nursing participants to obtain credits, they must claim attendance by attesting to the number of hours in attendance.

For more information related to nursing credits, contact Sally Sturgeon, DNP, R.N., SANE-A, AFN-BC, at **(502) 446-5889** or **sally.sturgeon@nortonhealthcare.org**.

## Rehabilitation providers and physical therapists

*Kentucky Board of Physical Therapy*

This program has been approved by APTA Kentucky, a Chapter of the American Physical Therapy Association, for 5.5 Category 1 contact hour(s).

For more information related to KPTA credits, contact Melanie Hoehn, P.T., MHA, at **(502) 446-8535** or **melanie.hoehn@nortonhealthcare.org**.

## Other attendees

*Confirmed attendance*

Confirmed attendance hours will be recorded for all other attendees. Hours of confirmed attendance will be equivalent to the number of hours of one's attested attendance.

For additional information related to confirmed attendance, contact the Norton Healthcare Center for Medical, Provider & Nursing Education at **(502) 466-5955** or **cme@nortonhealthcare.org**.

## Planning committee

Megan Anderkin (Norton Neuroscience Institute Resource Centers)

Karen Busse, M.S., CCMEC (Norton Healthcare Center for Medical, Provider & Nursing Education)

McKenna Byrley, B.A., CCMEC (Norton Healthcare Center for Medical, Provider & Nursing Education)

Yvette F. Cabrera-Rojas (Norton Neuroscience Institute Resource Centers)

Gregory E. Cooper, M.D., Ph.D. (Norton Neuroscience Institute)

Heather Osborne (Norton Neuroscience Institute Resource Centers)

Melissa Redick, MBA (Norton Medical Group)

Sally Sturgeon, DNP, R.N., SANE-A, AFN-BC (Norton Healthcare Center for Medical, Provider & Nursing Education)

Jessica Sumner, DNP, APRN, ACNS-BC, CEN (Norton Neuroscience Institute)

David A. Sun, M.D., Ph.D. (Norton Neuroscience Institute)

## Rehabilitation planning committee

Susan Barker, MHA, M.S., CCC-SLP (Norton Specialty Rehabilitation Center – St. Matthews)

Robin Dixon, P.T. (Norton Neurosciences & Spine Rehabilitation Center)

Melanie Hoehn, P.T., MHA (Cressman Neurological Rehabilitation)

## Faculty and planner disclosure

Norton Healthcare adheres to the Kentucky Medical Association and American Nurses Credentialing Center's guidelines and standards regarding the influence of commercial support for accredited continuing education as well as the Standards for Commercial Support regarding ineligible company support. During the planning process, all individuals in a position to control the content of the educational activity (course director, planners and presenters) are required to disclose all financial relationships with ineligible companies and the nature of that relationship. This information is assessed by the Norton Healthcare Center for Medical, Provider & Nursing Education to ensure an acceptable mitigation of any identified conflicts prior to the activity.

All attendees will be asked to evaluate the speakers' content for bias and balance.

## Registration

### Fees

**Attendees:** \$75

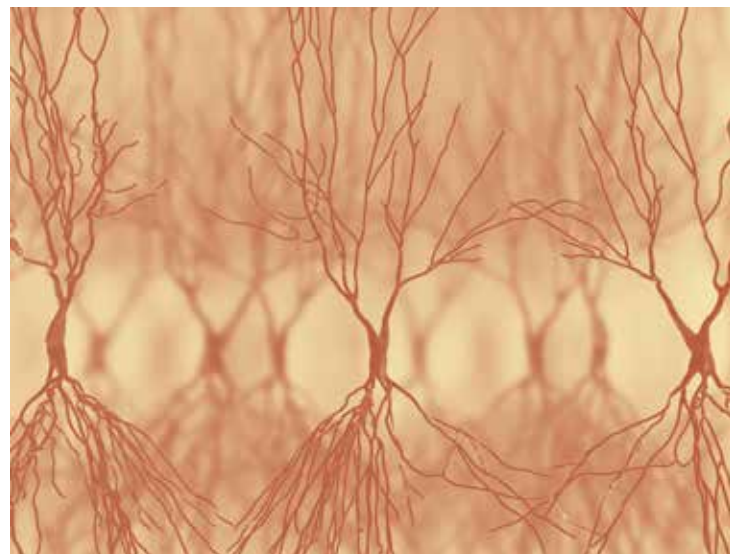
**Students and retired clinicians:** \$50

The registration fee includes breakfast, lunch, refreshments and program access.

**Deadline: Friday, Sept. 8, 2023**

To register:

1. Visit this [link](#) or [NortonCME.com](http://NortonCME.com) and locate the activity by date.
2. Scan the QR code:



## Cancellation policy

As a courtesy to our planners, if you must cancel registration, kindly do so by Friday Sept. 1, 2023, as planning for on-site catering and setup are final at this time. To cancel, email [cme@nortonhealthcare.org](mailto:cme@nortonhealthcare.org).

## Course materials

Presentation slides and symposium information will be available at [NortonCME.com](http://NortonCME.com). Select the "Conference Details/Presentation" option and then this activity.

## Acknowledgments

Norton Healthcare gratefully acknowledges participation from the following exhibitors at the time of this brochure printing.

AbbVie Inc.  
Alexion Pharmaceuticals  
Alzheimer's Association  
Amylyx Pharmaceuticals  
AstraZeneca  
Biogen  
Boston Scientific Corp.  
Bristol Myers Squibb  
EMD Serono  
Kyowa Kirin Co. Ltd.  
Lilly USA LLC  
Neurelis Inc.  
Neurotech LLC  
Norton Neuroscience Institute  
Novartis  
PAM Health  
Pallitius Health  
Parkinson's Foundation  
Pfizer Inc.  
Schad Law  
Sumitomo Pharma Co. Ltd.  
Supernus Pharmaceuticals Inc.  
Teva Pharmaceutical Industries Ltd.  
TG Therapeutics Inc.



**NORTON**  
**NEUROSCIENCE**  
**INSTITUTE**